

#### **CBI GROUP COMPANIES**

- INDUSTRIE CBI
- CBI SERVICE, CAMBIAGO
- CC BLOWERS, GISSI
- CBV, BELGIUM
- DE RAEDT INDUSTRIAL FANS, BELGIUM
- KVZ, RUSSIA
- CBI FRANCE
- CBI ESPANA
- CBI DEUTSCHLAND

#### **VENTMECA GROUP COMPANIES**

- VENTMECA FRANCE
- VENTMECA CHINA

#### **C.DOCTOR COMPANIES**

- C.DOCTOR & CO. PVT.LTD.
- C.DOCTOR INDIA PVT.LTD.





CB DOCTOR is a Joint Venture between **C.Doctor India Pvt.Ltd., Industrie CBI Group, Italy and Ventmeca, France** to cater to the Industrial Radial Fans and Blowers and Axial Fans catering to the Indian Sub Continent and South East Asian Countries. CB Doctor aims to partner our Customers from their Requirement Phase and support them through the product lifecycle of the Fan including Commissioning, Service, Spare Parts, Revamping and Training.

CB DOCTOR now combines the strengths of all the three partners to make available a Complete Range of **Standard Centrifugal Fans and Blowers, Heavy Duty Fans for Cement, Steel, Fertilizer, Petrochemical, Power, Chemical, Nuclear and Ship Building Industries and a complete range of Axial Fans including Jet Fans for tunnels and Underground Car Park Ventilation Fans**. CBI and Ventmeca combined technology provides to CB Doctor the best of the American and European Technology available for Fans and Blowers.



**C.DOCTOR INDIA PVT.LTD.** - CDIPL is a sister company of C.Doctor & Co. Pvt.Ltd. who is catering to the Indian customers since **1915**. CDIPL fans and blowers are running across industries in India and are well reputed for their reliability and robust construction. C.Doctor & Co.Pvt.Ltd. with 5 offices across India and Agents and Partners across South East Asia is well placed to provide excellent after Sales Service.



**CBI** - With **40 years** in the Industrial Fans business, Continuous Innovation in Aerodynamic technology and Manufacturing Capability and Processes has led CBI to become the **European leader** in Industrial Ventilators. Their fans are the most efficient and extremely robust and low in noise level. They have manufacturing facilities all across **Europe in Italy, Belgium and Russia**. CBI over the years have acquired several leading fan companies in Italy and Belgium.



**Ventmeca** - Ventmeca is one of the leading manufacturers of Industrial Fans in France and China. Ventmeca has grown on the strength of their ability to provide customised solutions to customers backed by superior quality. **50 years** of experience has given Ventmeca a unique combination of knowledge along with design skills to manufacture high efficiency industrial fans for industrial processes, environmental and general ventilation.





## Quality



Masters  
of the Winds

Our quality is certified.

The CBI, C.Doctor and Ventmecca Group has obtained and is operating with a Quality Control System which meets the ISO 9001:2000 standards.



The CBI group and also C.Doctor are members of the AMCA (Air Movement and Control Association)

Association



Our products meet the following standards:

AMCA  
API  
DIN  
ISO  
GOST

## R & D

The R&D division of the CBI Group is made up of a team of young engineers which is used to work with the best design software like:

- solid modelling
- structural analysis
- computational fluid dynamic

We also have a virtual laboratory which, by working on numerical simulation models, anticipates the effective aeraulic performances.

The design phase is then completed in our prototypes laboratory.

The CBI Group has:

- A totally automatic sophisticated test room for prototypes (Monza plant)
- A test room for aeraulic appraisal of high output fans in each production plant (Monza, Cambiago, Gissi, Tilff, Chekhovsky)



### SPECIAL INDUSTRIAL REQUIREMENTS

Our experience has been gained in the following industries:

- Paper mills.
- Chemical, petrochemical.
- Nuclear plants.
- Tobacco industry.
- Mining and steel mills.
- Food.
- Electrical and electronic engineering.
- Energy production.
- Gas turbines.
- Ship building.
- Rolling stock.
- Induced draft fans.
- Induced draft fans for sinter plants.
- Tunnel ventilation.
- Agriculture.
- Sugar refineries.
- Cement plants.
- Glass industries.

These include air-drying process, industrial air conditioning, dust and fume extraction, ventilation of painting rooms, forced and induced draught for boilers and furnaces.



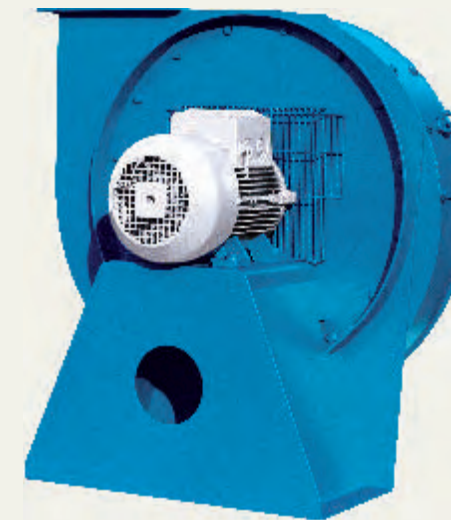
# Standard Fans



## ChAT/ChBT

600.000 m<sup>3</sup>/h - 3.000 Pa

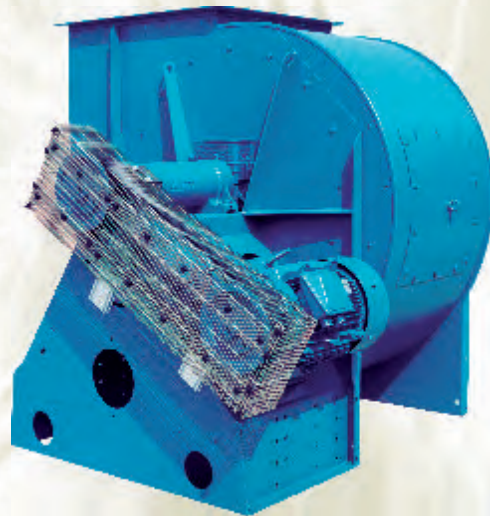
centrifugal fans with backward inclined airfoil or flat blades. Double width.



## HD/HV/HX

10.000 m<sup>3</sup>/h - 15.000 Pa

High pressure centrifugal fans designed to convey air gases containing dust, granular material, long shavings.



## ChA/ChB

600.000 m<sup>3</sup>/h - 4.500 Pa

centrifugal fans with backward inclined airfoil or flat blades. Single inlet. Both belt driven and direct coupled versions are available.



## SB/MB/XB

350.000 m<sup>3</sup>/h - 20.000 Pa

Centrifugal fans heavy duty design. Impeller with backward flat blades.



## KB/KR/KF

250.000 m<sup>3</sup>/h - 5.500 Pa

centrifugal fans designed to convey gases containing dust, granular material, long shavings. Both belt driven and direct coupled versions are available.



## GAV/GAX

300.000 m<sup>3</sup>/h - 1.300 Pa

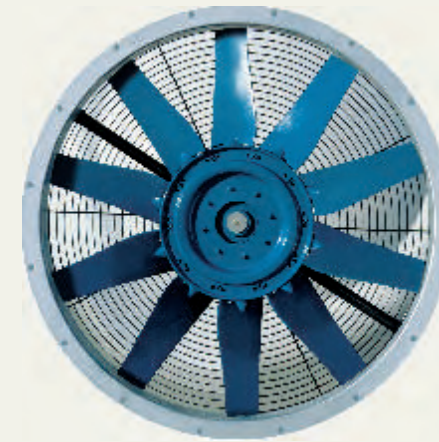
Axial fans with adjustable pitch angle airfoil blades in aluminium alloy.

# Standard Fans

## EFA

**480.000 m<sup>3</sup> /h - 1.800 Pa**  
Axial fans with adjustable pitch angle airfoil aluminium extruded blades.

---



## AP

**35.000 m<sup>3</sup> /h - 100 Pa**  
Wall axial fans with airfoil blades in aluminium alloy

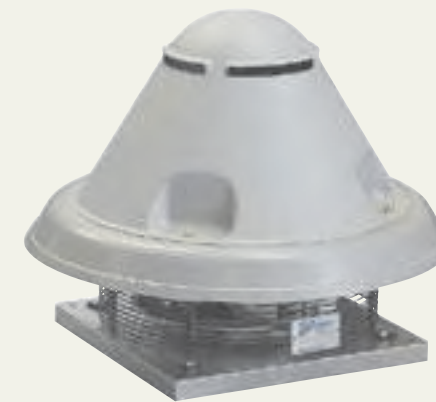
---



## GAT

**50.000 m<sup>3</sup> /h - 600 Pa**  
Axial belt driven fans with airfoil blades in aluminium alloy

---



## ARIES

**17.000 m<sup>3</sup> /h - 650 Pa**  
Centrifugal roof unit with backward inclined blades.

---



## CBJET

**150.000 m<sup>3</sup> /h - 1.600 Pa**  
Axial jet fans for tunnel ventilation.

---

## SIRIO

**42.000 m<sup>3</sup> /h - 250 Pa**  
Axial roof unit.

---



# Heavy Duty



## ChA 44 DIDW

- Quantity 1
- Capacity 160.000 m<sup>3</sup> /h
- Pressure 1.900 Pa
- Operating temp. 240°
- Rotation 1.180 R.P.M.
- Motor Power 110 kW
- Plant Bataan refinery
- Location Philippines



## Thyssen Krupp Steel Plant

Duisburg Germany

- N°4 Centrifugal fans type CP8001S2500 A3CS8BR
- 550.000 m<sup>3</sup>/h - 6.000 Pa
- 1350 kW



## CHA-T 60

- Quantity 4
- Capacity 365.000 m<sup>3</sup> /h
- Pressure 7.800 Pa
- Rotation 1.480 R.P.M.
- Motor Power 950 kW
- Plant Power and deslination station
- Location Jebel Ali - UAE



## Valsabbia Steel Plant

Brescia Italy

- N°3 Centrifugal fans type ChA 80
- 510.000 m<sup>3</sup>/h - 7.500 Pa
- 1.500 kW



## Incineration

- Ø 1.490 mm
- 250 kW
- T° : 90° C



## Desalination Plant

Jebel Ali - UAE

- N°4 Centrifugal fans type ChA-T 60
- 365.000 m<sup>3</sup>/h - 7.800 Pa
- 950 kW



# Heavy Duty



**Boiler**  
Modena Italy



**400°C/2 hours fire test**  
CTICM France



**Mathura Refinery**  
Mathura India



**Alfacciai Steel Plant**  
Brescia Italy



**Rome Refinery**  
Rome Italy



**Lafarge Cement Plant**  
Dunbar Scotland



# Service & Maintenance

## Installation and Start-up

This activity includes:  
 "Turn-key" erection of any type of rotating machine and accessories.  
 Supervision and control during installation.  
 Assistance during start-up.

We can guarantee accurate manufacture and project management until delivery of the plant to the final customer.

These activities are carried out by skilled and qualified personnel using the most advanced and up-to-date systems and instrumentation.

The control of alignment is carried out by laser while control of vibration levels and balancing of rotating parts is executed using the most advanced FFT analysers.



## Spare parts and maintenance

- This activity includes:
- Balancing of rotating parts in site or in our factory.
  - Alignment with laser equipment.
  - Diagnosis of the status of the rotating machines.
  - Planning of work according to predicted failures.
  - Tailor-made maintenance programs.
  - Supply and installation of original spare parts.
  - Management of customer's spare part stocks.
  - Manufacturing of spare parts for out-of-production rotating machines.

Thanks to our data bank we are able to offer any type of original spare part or a perfectly interchangeable spare part with the technical and mechanical improvements which have been made in the meantime.



## Test & Diagnosis

- Aeraulic performances measurement.
  - Noise levels measurements.
  - Balancing speed rotation.
  - Vibration levels measurements.
  - Alignment control (laser aided).
  - Monitoring of bearings wear-and-tear.
  - Planned maintenance to ensure good operation.
  - Detailed analysis report.
- Aeraulic tests in accordance with ISO, AMCA, Indian Standards and British Standards.
  - Running test (mechanical tests with measurement of vibration levels and temperatures).
  - Noise levels measurements.
  - Overspeed failure tests.
  - Running test at high temperatures.

To ensure a correct running of the rotating machine it is advisable to carry out periodical inspection by skilled personnel.

We have several mobile facilities equipped with the most advanced instruments for the analysis and control, manned by our long-experienced skilled technicians.



## Overhaul and Revamping

- This activity includes:
- Complete overhauling of old fans at our workshop or at workshops close to the installation site.
  - Technical upgrading of old or out-of-order fans.
  - Improvement revamping of fan performance by modification of some components.

Old fans performance can be improved by introducing the latest technological innovations.

This is made following the advice of our technical department which has a long experience in this type of work.



## Training

- This activity includes:
- Courses to train the correct fan installation and start-up.
  - Courses to train the correct fan maintenance.
  - Courses to train the correct use of the electronic equipments for control and rotating machine.

We can organize training courses to your personnel at your permises.

The purpose of these courses, prepared in accordance with the customer, is to train technicians to work in total autonomy.

